

CBS - Carsten Daus GmbH

Friedberger Str. 35
D - 63452 Hanau (Germany)

CAGE CODE: DL161

LIQUID SOAP DISPENSER

PART NUMBER

SD300BU-88

COMPONENT MAINTENANCE MANUAL WITH ILLUSTRATED PARTS LIST

Issue: A
Date: Oct 01/2010

25-40-03

Oct 01/2010

RECORD OF REVISIONS

REV. NO.	ISSUE DATE	INSERTED		REASON FOR REVISION
		DATE	BY	
A	OCT 01/2010	OCT 01/2010	CBS	First Issue



COMPONENT MAINTENANCE MANUAL
SOAP DISPENSERS
SEIFENSPENDER
SD300BU-88

No. : 25-40-03
Issue: A
Date: Oct 01/2010

RECORD OF TEMPORARY REVISIONS

TEMP REV	PAGE NUMBER	ISSUE DATE	BY	DATE REMOVED	BY



COMPONENT MAINTENANCE MANUAL
SOAP DISPENSERS
SEIFENSPENDER
SD300BU-88

No.: 25-40-03

Issue: A

Date: Oct 01/2010

SERVICE BULLETIN LIST

SERVICE BULLETIN NUMBER	MODIFICATION	INSERTION	
		DATE	BY

LIST OF EFFECTIVE PAGES

<u>SUBJECT</u>	<u>PAGE</u>	<u>DATE</u>	<u>SUBJECT</u>	<u>PAGE</u>	<u>DATE</u>
<u>TITLEPAGE</u>			<u>DESCRIPTION AND OPERATION</u>		
TITLE 1	OCT 01/2010			1	OCT 01/2010
<u>RECORD OF REVISIONS</u>				2	OCT 01/2010
ROR 1	OCT 01/2010			3	OCT 01/2010
<u>RECORD OF TEMPORARY REVISIONS</u>					
ROTR 1	OCT 01/2010		<u>TESTING AND FAULT ISOLATION</u>		
<u>SERVICE BULLETIN LIST</u>				1001	OCT 01/2010
SBL 1	OCT 01/2010		<u>DISASSEMBLY</u>		
<u>LIST OF EFFECTIVE PAGES</u>				3001	OCT 01/2010
LEP 1	OCT 01/2010		<u>CLEANING</u>		
LEP 2	OCT 01/2010			4001	OCT 01/2010
<u>TABLE OF CONTENTS</u>			<u>CHECK</u>		
TOC 1	OCT 01/2010			5001	OCT 01/2010
TOC 2	OCT 01/2010		<u>REPAIR</u>		
TOC 3	OCT 01/2010			6001	OCT 01/2010
<u>LIST OF TABLES</u>			<u>ASSEMBLY</u>		
LOT 1	OCT 01/2010			7001	OCT 01/2010
<u>LIST OF ILLUSTRATION</u>			<u>FITS AND CLEARANCES</u>		
LOI 1	OCT 01/2010			8001	OCT 01/2010
<u>INTRODUCTION</u>					
INTRO 1	OCT 01/2010				
INTRO 2	OCT 01/2010				
INTRO 3	OCT 01/2010				
INTRO 4	OCT 01/2010				

<u>SUBJECT</u>	<u>PAGE</u>	<u>DATE</u>
<u>SPECIAL TOOLS, FIXTURES AND EQUIPMENT</u>		
	9001	OCT 01/2010
<u>ILLUSTRATED PARTS LIST</u>		
IPL-TP	10001	OCT 01/2010
<u>INTRODUCTION</u>		
INTRO	10001	OCT 01/2010
INTRO	10002	OCT 01/2010
INTRO	10003	OCT 01/2010
INTRO	10004	OCT 01/2010
<u>NUMERICAL INDEX</u>		
NI	10001	OCT 01/2010
<u>DETAILED PARTS LIST</u>		
DPL	10001	OCT 01/2010
10001A-0		OCT 01/2010
10001A-1		OCT 01/2010
10002A-0		OCT 01/2010
10002A-1		OCT 01/2010
10003A-0		OCT 01/2010
10003A-1		OCT 01/2010
10004A-0		OCT 01/2010
10004A-1		OCT 01/2010
<u>SPECIAL PROCEDURES</u>		
	11001	OCT 01/2010

<u>SUBJECT</u>	<u>PAGE</u>	<u>DATE</u>
<u>REMOVAL</u>		
	12001	OCT 01/2010
<u>INSTALLATION</u>		
	13001	OCT 01/2010
	13002	OCT 01/2010
<u>SERVICING</u>		
	14001	OCT 01/2010
	14002	OCT 01/2010
<u>STORAGE</u>		
	15001	OCT 01/2010

TABLE OF CONTENTS

<u>I N T R O D U C T I O N</u>	<u>I N T R O</u>	<u>1</u>
<u>1. G E N E R A L</u>	<u>I N T R O</u>	<u>1</u>
<u>2. M A N U F A C T U R E</u>	<u>I N T R O</u>	<u>1</u>
<u>3. S P A R E S S U P P O R T</u>	<u>I N T R O</u>	<u>1</u>
<u>4. L A Y O U T O F M A N U A L</u>	<u>I N T R O</u>	<u>3</u>
<u>5. M A I N T E N A N C E P O L I C Y</u>	<u>I N T R O</u>	<u>3</u>
<u>6. R E V I S I O N S E R V I C E</u>	<u>I N T R O</u>	<u>3</u>
<u>7. S H O P V E R I F I C A T I O N</u>	<u>I N T R O</u>	<u>3</u>
<u>8. W A R N I N G, C A U T I O N, N O T E S</u>	<u>I N T R O</u>	<u>3</u>
<u>9. M E A S U R E M E N T U N I T S</u>	<u>I N T R O</u>	<u>3</u>
<u>10. L I S T O F A B B R E V I A T I O N S</u>	<u>I N T R O</u>	<u>4</u>
<u>D E S C R I P T I O N A N D O P E R A T I O N</u>		<u>1</u>
<u>1. G E N E R A L</u>		<u>1</u>
<u>2. D E S C R I P T I O N</u>		<u>1</u>
<u>3. O P E R A T I O N</u>		<u>1</u>
<u>4. T E C H N I C A L D A T A</u>		<u>1</u>
<u>T E S T I N G A N D F A U L T I S O L A T I O N</u>		<u>1001</u>
<u>1. G E N E R A L</u>		<u>1001</u>
<u>2. L I S T O F P O S S I B L E D E F E C T S</u>		<u>1001</u>
<u>D I S A S S E M B L Y</u>		<u>3001</u>
<u>1. G E N E R A L</u>		<u>3001</u>
<u>2. P R O C E D U R E</u>		<u>3001</u>

CLEANING	4001
1. GENERAL	4001
2. PROCEDURE	4001
CHECK	5001
1. GENERAL	5001
REPAIR	6001
1. GENERAL	6001
ASSEMBLY	7001
1. GENERAL	7001
2. PROCEDURE	7001
FITS AND CLEARANCE	8001
1. GENERAL	8001
SPECIAL TOOLS, FIXTURES AND EQUIPMENT	9001
INTRODUCTION	INTRO 10001
1. GENERAL	INTRO 10001
2. MATERIAL ARRANGEMENT	INTRO 10001
NUMERICAL INDEX	NI 10001
DETAILED PARTS LIST	DPL 10001
SPECIAL PROCEDURES	11001
1. NOT APPLICABLE	11001
REMOVAL	12001
A. PROCEDURE	12001
INSTALLATION	13001
A. LIST OF MATERIALS	13001



COMPONENT MAINTENANCE MANUAL
SOAP DISPENSERS
SEIFENSPENDER
SD300BU-88

No. : 25-40-03

Issue: A

Date: Oct 01/2010

B. GENERAL	13001
C. PROCEDURE	13001
SERVICING	14001
1. REFILLING	14001
STORAGE	15001
1. GENERAL	15001



COMPONENT MAINTENANCE MANUAL
SOAP DISPENSERS
SEIFENSPENDER
SD300BU-88

No.: 25-40-03

Issue: A


Date: Oct 01/2010

LIST OF TABLES

<u>TITLE</u>	<u>TABLE</u>	<u>PAGE</u>
FAULT ISOLATION CHART	TABLE 1001	1001
CLEANING MATERIALS	TABLE 4001	4001
TORQUE VALUES	TABLE 8001	8001
INSTALLATION MATERIALS	TABLE 13001	13001

LIST OF ILLUSTRATION

<u>TITLE</u>	<u>FIGURE</u>	<u>PAGE</u>
DIMENSION OF SD300BU-88 BASE UNIT	FIGURE 1	3
LIQUID SOAP DISPENSER - SD300BU-88	FIGURE 1A	10001A-0
COVER	FIGURE 2A	10002A-0
HOLDER	FIGURE 3A	10003A-0
SCREW ASSY	FIGURE 4A	10004A-0
REMOVAL OF SD300BU-88	FIGURE 12001	12001
INSTALLATION OF SD300BU-88	FIGURE 13001	13002
REFILLING OF SOAP DISPENSER SD300BU-88	FIGURE 14001	14001

	<p align="center">COMPONENT MAINTENANCE MANUAL SOAP DISPENSERS SEIFENSPENDER SD300BU-88</p>	<p>No.: 25-40-03 Issue: A Date: Oct 01/2010</p>
---	--	---

INTRODUCTION

1. GENERAL

This Component Maintenance Manual (CMM) contains maintenance information and Illustrated Parts List (IPL) for the Soap Dispensers installed in aircraft lavatories.

The information is prepared in accordance with Air Transport requirements.

2. MANUFACTURER

The Soap Dispensers are manufactured by:

CAGE CODE: DL161

CBS - Carsten Daus GmbH
Friedberger Str. 35
D-63452 Hanau (Germany)

Telephone: +49 (0) 6181 3040 818
Telefax: +49 (0) 6181 3040 885
E-mail: service@DausCBS.com
Internet: <http://www.dauscbs.com>

3. SPARES SUPPORT

The Soap Dispenser is supported by:

CAGE CODE: DL161

CBS - Carsten Daus GmbH
Friedberger Str. 35
D-63452 Hanau (Germany)

Telephone: +49 (0) 6181 3040 818
Telefax: +49 (0) 6181 3040 885
E-mail: service@DausCBS.com
Internet: <http://www.dauscbs.com>

SATAIR A/S
Amager Landevej 147A
DK-2770 Kastrup (Denmark)

CAGE CODE: R1120

Phone: +45 3247 0100
Fax: +45 3251 3434
AOG Phone: +45 4040 1224
SITA: CPHSA7X
info@satair.com / <http://www.satair.com>

LEKI AVIATION A/S
Amager Landevej 278
DK-2770 Kastrup (Denmark)

CAGE CODE: R3867 and QB727

Phone: +45 3251 9550
Fax: +45 3251 9551
AOG Phone: +45 4051 9550
SITA: CPHLKCR
dk@lekiaviation.com / <http://www.lekiaviation.com>

INTERTURBINE LOGISTIK GMBH
Kisdorfer Weg 36 - 38
D-24568 Kaltenkirchen (Germany)

CAGE CODE: C5543

Phone: +49 4191 809 300
Fax: +49 4191 809 333
AOG Phone: +49 4191 809 444
SITA: HAMI BCR
SPEC 2000
service@itlogistics.de / <http://www.itlogistics.de>

4. LAYOUT OF MANUAL

This manual contains 14 chapters. The main chapters are general description and operation followed by data for testing and fault isolation, repair, disassembly and assembly of the Soap Dispenser. This is followed by an Illustrated Parts List which gives detailed breakdown information.

5. MAINTENANCE POLICY

The Component Maintenance Manual provides procedures that will enable an approved repairer, who is unfamiliar with the component, to restore the Soap Dispenser to a serviceable condition. These procedures are prepared for the shop mechanic who performs work.

6. REVISION SERVICE

This manual will be updated as required by revisions. Changes to hardware given in service bulletins will be included in this manual with revisions. Configuration changes will be shown in the text by the service bulletin number, i.e. pre SB- and post SB-. Procedures of illustrations not identified by pre SB- or post SB- refers to all configurations. In order to receive all new revisions and service bulletins you can subscribe to an online revision service at: <http://www.dauscbs.com/en/newsletter.php>

7. SHOP VERIFICATION

The procedures within this manual have been shop verified by the manufacturer. The sections Testing, Disassembly and Assembly and Storage were verified by actually performing the functions described in these sections.

8. WARNING, CAUTIONS, NOTES

These adjuncts to the text are expressed by the following headings:

WARNING: WARNINGS CALL ATTENTION TO THE USE OF MATERIALS, PROCESSES, PROCEDURES, METHODS OR LIMITS WHICH MUST BE ADHERED PRECISELY TO AVOID DEATH OR INJURY TO PERSONS.

CAUTION: CAUTIONS CALL ATTENTION TO METHODS AND PROCEDURES WHICH MUST BE FOLLOWED TO AVOID DAMAGE TO EQUIPMENT.

NOTE: NOTES CALL ATTENTION TO METHODS WHICH MAKE THE JOB EASIER.

9. MEASUREMENT UNITS

All the units in this manual are metric with English equivalents shown in brackets. Units of temperature are in degree Celsius, Fahrenheit shown in brackets.

10. LIST OF ABBREVIATIONS

ASSY	ASSEMBLY
C	CELSIUS
cm	CENTIMETER
CMM	COMPONENT MAINTENANCE MANUAL
DES	DESCRIPTION AND OPERATION
Det	DETAILS
EFF	EFFECTIVE
F	FAHRENHEIT
FIG	FIGURE
FWD	FORWARD
in	INCH
IPL	ILLUSTRATED PARTS LIST
kg	KILOGRAMM
lb	POUND
LH	LEFT HAND
max.	MAXIMUM
mm	MILLIMETER
NHA	NEXT HIGHER ASSY
NO.	NUMBER
REF	REFERENCE
RH	RIGHT HAND
SB	SERVICE BULLETIN

DESCRIPTION AND OPERATION

1. GENERAL

This section has description and operation information for the Liquid Soap Dispenser.

2. DESCRIPTION

A. The Liquid Soap Dispenser, herein referred to as the unit, is installed in aircraft lavatories. The unit is mounted on the lavatory cabinet surface. The disposable soap bottle is placed inside the unit.

B. The cover (10) and holder (20) are made of stainless steel; inside-cover is made of ABS-plastic.

C. The Liquid Soap Dispensers consists mainly of 3 parts:

- Cover (10) allows to open and close the soap dispenser by turning
- Holder (20) which is installed through a hole in the counter top, holds the disposable soap bottle (not included) inside and will be closed with the cover
- Screw Assy (30) - installation kit

3. OPERATION

A. The soap dispenser holds firm a disposable liquid soap dispenser bottle and outputs liquid soap by each manual depression of the pump of the disposable liquid soap dispenser. Single-hand operation of the unit is possible.

NOTE: Cleaning of the soap container must be carried out after 18 months or whenever it is obviously necessary (Ref. to chapter CLEANING).

4. TECHNICAL DATA

A. Filling capacity

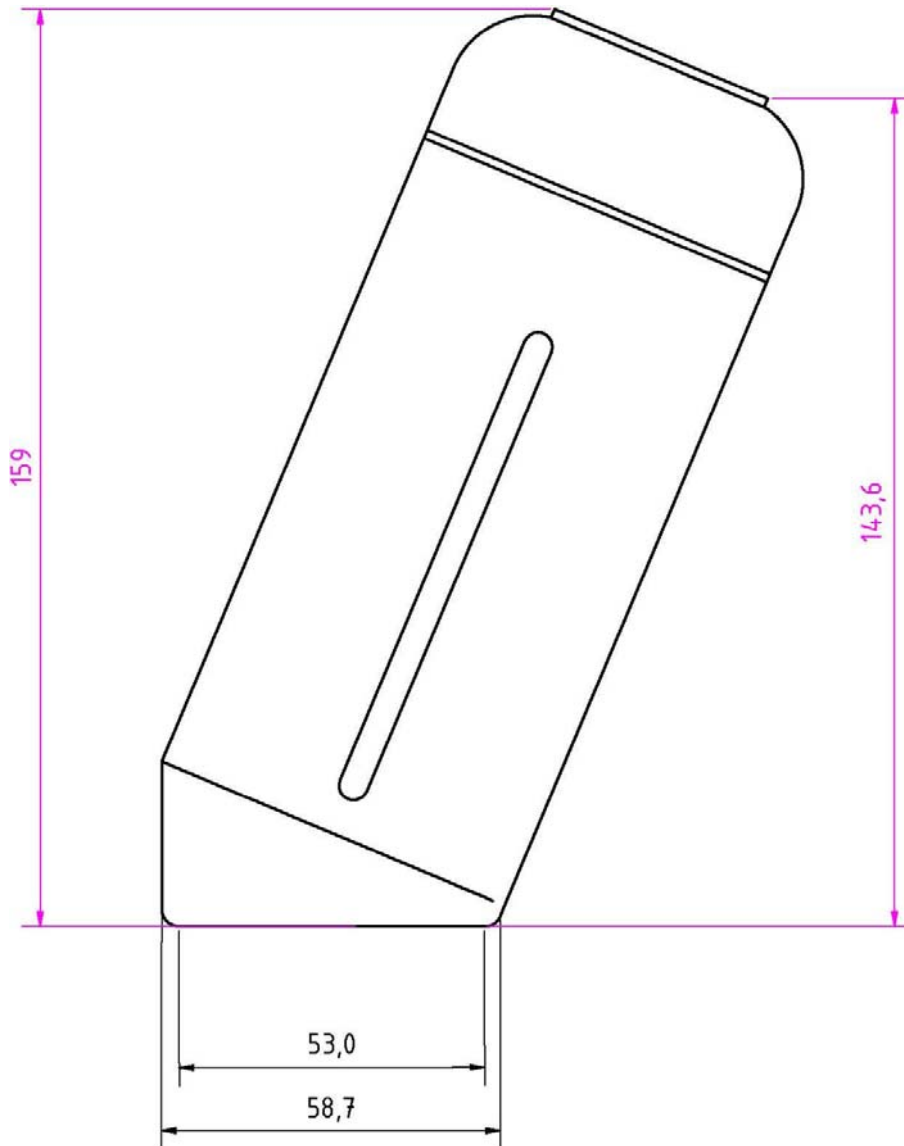
The unit can hold disposable liquid soap dispenser bottles from different manufacturers with a filling capacity of:

- Manufacturer: CBS - Carsten Daus GmbH

A variety of disposable liquid foaming hand soap dispensers, content 0,250 l (8.45 oz.) for approx. 360 washings

- Manufacturer: Celeste Industries Inc.

A variety of disposable liquid hand soap dispensers, content and washings are depending on the manufacturer and are out of our influence or responsibility.



DIMENSION SD300BU-88 BASE UNIT
FIGURE 1

TESTING AND FAULT ISOLATION

1. GENERAL

- A. This section contains testing and fault isolation for the Liquid Soap Dispenser.
- B. The procedures given below must be completed if a failure is found with Liquid Soap Dispenser during use, or to make sure that the unit is serviceable before it is put into or put back into service.
- C. Carry out all procedures in a clean area to avoid scratches or other damages of any part.
- D. Numbers in parenthesis following item names in the procedures refer to the figures and item numbers in page-block 10001, ILLUSTRATED PARTS LIST.
- E. Make a visual inspection of the Liquid Soap Dispenser as detailed in page-block 5001, CHECK.

2. LIST OF POSSIBLE DEFECTS

NOTE: Ensure that soap bottle is filled. If the unit does not discharge any soap and defects listed below are not determinable, replace soap bottle (Refer to chapter SERVICING).

FAULT	PROBABLE CAUSE	CORRECTION ACTION
NO, OR INSUFFICIENT SOAP DISCHARGE UNIT CAN NOT BE CLOSED	A. PUMP OF THE DISPOSABLE SOAP BOTTLE MIGHT BE LOOSE OR BROKEN	- CHECK CONNECTION BETWEEN PUMP AND BOTTLE; IF FAULT CONSIST REPLACE FAILING BOTTLE WITH A NEW ONE
	B. COVER IS BROKEN	- REPLACE COVER
	C. HOLDER IS BROKEN	- REPLACE HOLDER
	D. DISPOSABLE SOAP BOTTLE IS TOO LARGE	- REPLACE DISPOSABLE SOAP DISPENSER BOTTLE WITH A NEW SOAP DISPENSER BOTTLE WITH THE CORRECT SIZE

FAULT ISOLATION CHART
TABLE 1001

DI SASSEMBLY

1. GENERAL

A. The disassembly of the Soap Dispenser Base Unit is necessary to replace a part, to carry out repairs, or to overhaul the Soap Dispenser Base Unit.

NOTE: The degree of disassembly carried out shall not be more than necessary. For identification of damage or function failures refer to the chapters CHECK and TESTING AND FAULT ISOLATION.

2. PROCEDURE

Disassembly of SD300BU-88 (Ref. IPL, Fig. 1A to 4A)

- (1) Remove cover (10) by turning it counter clockwise from holder approx. 5mm (20).
- (2) Remove disposable soap bottle if any inside the holder (20).

NOTE: For procedure refer to chapter SERVICING.

- (3) Disassembly of Screw Assy (Ref. IPL, Fig. 4A)
 - (a) Remove nut (70) from screw (40).
 - (b) Separate nut (70), metal washer (60), rubber washer (50) and screw (40) from holder (20).

CLEANING

1. GENERAL

A. List of Materials, Tools and Fixtures

WARNING: THE INSTRUCTIONS FOR USING THE MATERIALS HAVE TO BE OBSERVED (REFER TO THE CORRESPONDING MATERIAL SUPPLIER'S INSTRUCTIONS).

NOTE: Equivalent substitutes can be used for listed items.

MATERIAL	SPECIFICATION	SOURCE
CLEAN WATER		LOCAL PURCHASE

CLEANING MATERIALS
TABLE 4001

2. PROCEDURE

CAUTION: TO PREVENT DAMAGE OR DISTORTION OF THE UNIT DO NOT USE ABRASIVE CLEANERS.

NOTE: Cleaning must be carried out after 18 months or if obviously necessary.

- A. Clean the surface of the SD300BU-88 unit with a dampened cloth.
- B. If you use water with additional cleaners, use only cleaners that are allowed for stainless steel.
- C. With a dry cloth dry the SD300BU-88 unit after cleaning.

CHECK

1. GENERAL

A. Procedure

- (1) Check all parts of the unit visually. Parts which are defective, broken or deformed have to be replaced.

REPAIR

1. GENERAL

No special repair procedure is applicable. Defective parts must be replaced.

ASSEMBLY

1. GENERAL

Before assembly, make sure that the CLEANING, CHECK and REPAIR procedures for all component parts have been completed.

2. PROCEDURE

Assembly of SD300BU-88 (Ref. IPL, Fig. 1A to 4A)

- (1) Insert screw (30) into the holder (20) bottom.
- (2) Install rubber washer (40) onto the screw (30).

No further assembly needs to be done before installation.

FITS AND CLEARANCES

1. GENERAL

- A. This topic gives torque values.
- B. Torque values (Ref. Table 8001)

(1) All torque values given in this manual are shown in the table of torque values. The parts are identified by the IPL figure and item number.

IPL FIG AND ITEM NO.	NOMENCLATURE	TORQUE VALUE
4A – 70	NUT, SELF-SECURING	15,00 NM (11.06 FT. LB.)

TORQUE VALUES
TABLE 8001



COMPONENT MAINTENANCE MANUAL
SOAP DISPENSERS
SEIFENSPENDER
SD300BU-88

No.: 25-40-03

Issue: A

Date: Oct 01/2010

SPECIAL TOOLS, FIXTURES AND EQUIPMENT

1. GENERAL

No SPECIAL TOOLS, FIXTURES or EQUIPMENT is required.



COMPONENT MAINTENANCE MANUAL
SOAP DISPENSERS
SEIFENSPENDER
SD300BU-88

No. : 25-40-03

Issue: A

Date: Oct 01/2010

ILLUSTRATED PARTS LIST

I PL-TP
PAGE 10001

25-40-03

Oct 01/2010

INTRODUCTION

1. GENERAL

This IPL contains the complete listing of all replaceable parts of the SD300BU-88 unit.

2. MATERIAL ARRANGEMENT

A. This IPL comprises the following sections:

(1) Introduction

The introduction contains all explanatory information for the individual sections as is necessary for use of this IPL. The introduction further contains a list of abbreviations used in detailed parts list as well as a list of manufacturer's codes together with manufacturer's names and addresses.

(2) Numerical Index

(a) This section contains a listing of part numbers of all items listed in the detailed parts list in alpha/numerical sequence with cross-reference to respective Fig./Item Nos. as well as units per assy. The order of precedence in beginning the part number arrangement at the left-hand (first) position is as follows:

- letters A through Z (except ,0' to be considered zero),
- numerals 0 through 9.

(b) For subsequent rows, the order is:

- a dash (-),
- letters A through Z (except ,0' to be considered zero),
- numerals 0 through 9.

(3) Detailed Parts List

(a) Column FIG. ITEM

The first number in the first line of a page indicates the number of the figure illustrating the part. The second number indicates the item number by which the part is identifiable on the illustration. A dash (-) placed before the item number indicates the part is not illustrated.

(b) Column PART NUMBER

The part number column contains the original manufacturer's part number. When standard parts are used, the standard part number is listed in this column.

1 CBS - Carsten Daus GmbH's Part Number Arrangement

Example:

SD300BU-88

SD300 ----- Model number

BU ----- Type BU = Base Unit/SP = Spare Part

88 ----- Identifier

(c) Column AIRLINE STOCK NUMBER

This column is left blank for airline internal use.

(d) Column IND

The indenture system shows the relationship of parts and assemblies to next higher assemblies or installations as follows:

IND

- 1 Assembly or installation assembly RF number.
- 2 Detail parts of assembly or sub-assembly.
- 3 Detail parts of sub-assembly or sub-sub-assembly.
- 4 etc.

(e) Column NOMENCLATURE

1 Attaching parts

Attaching parts are captioned ATTACHING PARTS and are listed immediately following the parts attached.

The *** symbol follows the last item of the attaching parts group. Column EFF CODE

2 Cage (Vendor) Code

Parts manufactured by companies other than CBS-Carsten Daus GmbH are identified by an appropriate cage (vendor) code following the nomenclature. Vendor codes are in accordance with current issues of Federal Supply Codes for Manufacturers Cataloguing Handbooks H4-1, H4-2 and H4-3, and are preceded by the letter „V“. Standard parts such as An, MS etc. are not identified by a vendor code.

(f) Column EFF CODE

The Effectivity Code column establishes a part relationship with units or assemblies which are essentially the same but have minor deviations. These units or assemblies are assigned reference letters such as A, B, C etc. Parts which are not common to all configurations but are associated with one or more of the coded lead items, carry the letter or letters assigned to the lead item with which it is associated. Where a part is common to all lead items, the effectivity column is left blank.

(g) Column UNITS PER ASSY

This column contains the quantity of a specific catalog sequence numbered part required in the build sequence of only one (where more than one exists) next higher sub-sub-assembly, sub-assembly, assembly or installation level as applicable. For bulk items, the letters "AR" are inserted in the quantity column to indicate "as required". Where items are listed for reference purpose, "RF" is inserted.

(4) Explanation of Terms and Symbols

- (a) Part numbers with more than 15 characters require the introduction of a dummy part number with a cross-reference to the over length part number. This will be shown in the detailed parts list as follows:
"OPN xxxxxxxxxxxxxxxx (Vx)
- (b) Part numbers amended with a capital letter (shown in the nomenclature column) means that this equipment is improved without any change to the operational effect.
- (c) The term "REPLD BY" means that the part in the part number column is replaced by and is interchangeable with the part number shown in the notation.
- (d) The term "REPL" means that the part in the part number column replaces and is interchangeable with the part number shown in the notation.
- (e) The term "ALT" means that the part is an alternative for another part with equal value, weight, dimension, etc. Can be noted with certain specifications or completely interchangeable.

- (f) The term "IND" means that the part is completely equal to other variants listed without any differing specifications. It may be used in any instance where the alternate part is referenced.
- (g) The term "NP" means that the part is not procurable. Order next higher assembly.

(5) List of Abbreviations

The following abbreviations are used in this IPL:

Abbreviation

ALT	ALTERNATE PART NUMBER
AR	AS REQUIRED
ASSY	ASSEMBLY
BKDN	BREAKDOWN
DET	DETAIL
EFF	EFFECTIVE/EFFECTIVITY
FIG	FIGURE
IN	INCH
IND	INDENTURE
IPL	ILLUSTRATED PARTS LIST
L	LITER
MM	MILLIMETER
NHA	NEXT HIGHER ASSEMBLY
NO	NUMBER
NOS	NUMBERS
NP	NOT PROCURABLE
OPN	OVERLENGTH PART NUMBER
OPT	OPTIONAL PART NUMBER
PNR	PART NUMBER
REPLD	REPLACED
REPLS	REPLACES
REQ	REQUIRED
RF	REFERENCE
SUPSD	SUPERSEDED
SUPSDS	SUPERSEDES
TTL	TOTAL
V	VENDOR

(6) List of Vendors

Not applicable



COMPONENT MAINTENANCE MANUAL
SOAP DISPENSERS
SEIFENSPENDER
SD300BU-88

No. : 25-40-03

Issue: A

Date: Oct 01/2010

NUMERICAL INDEX

PART NUMBER	AIRLINE STOCK NO.	FIG	ITEM	TTL REQ
SD300BU-88		01A	010-030	1
SD300SP-10		02A	010	1
SD300SP-20		03A	020	1
SD300SP-30		01A	030	1
SD300SP-40		04A	040	1
SD300SP-50		04A	050	1
SD300SP-60		04A	060	1
SD300SP-70		04A	070	1



COMPONENT MAINTENANCE MANUAL
SOAP DISPENSERS
SEIFENSPENDER
SD300BU-88

No. : 25-40-03

Issue: A

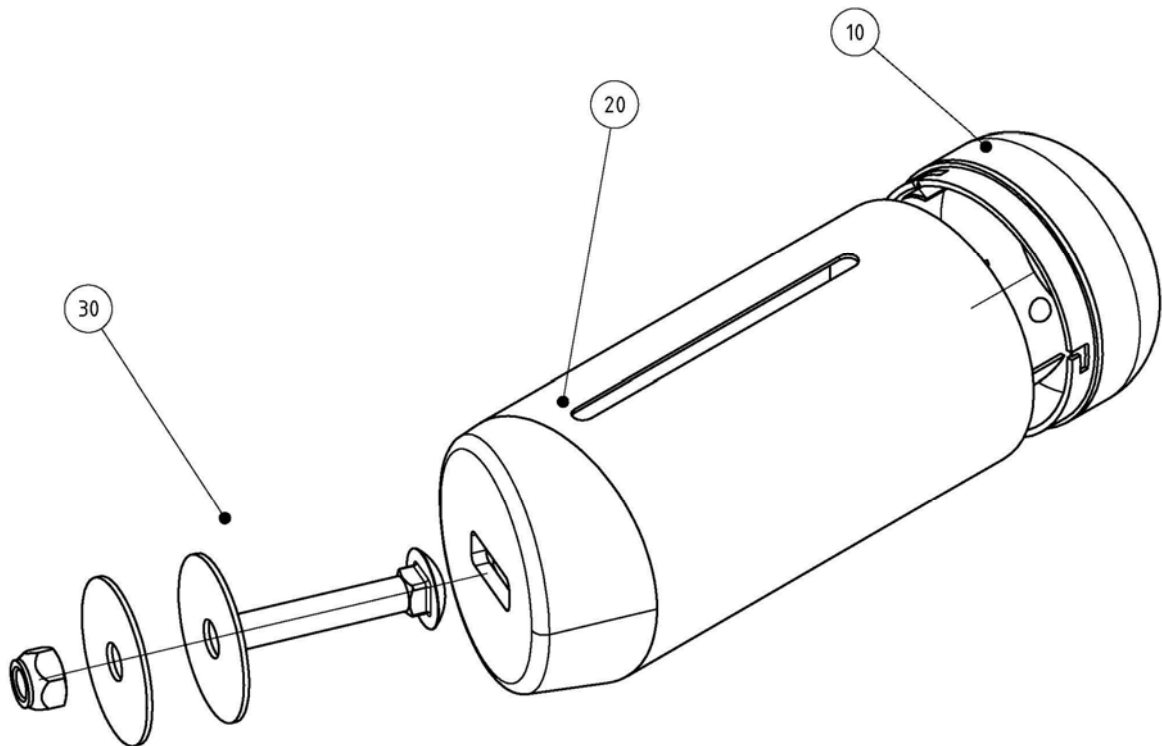
Date: Oct 01/2010

DETAILED PARTS LIST

DPL
PAGE 10001

25-40-03

Oct 01/2010



LIQUID SOAP DISPENSER BASE UNIT - P/N SD300BU-88
FIGURE 1A

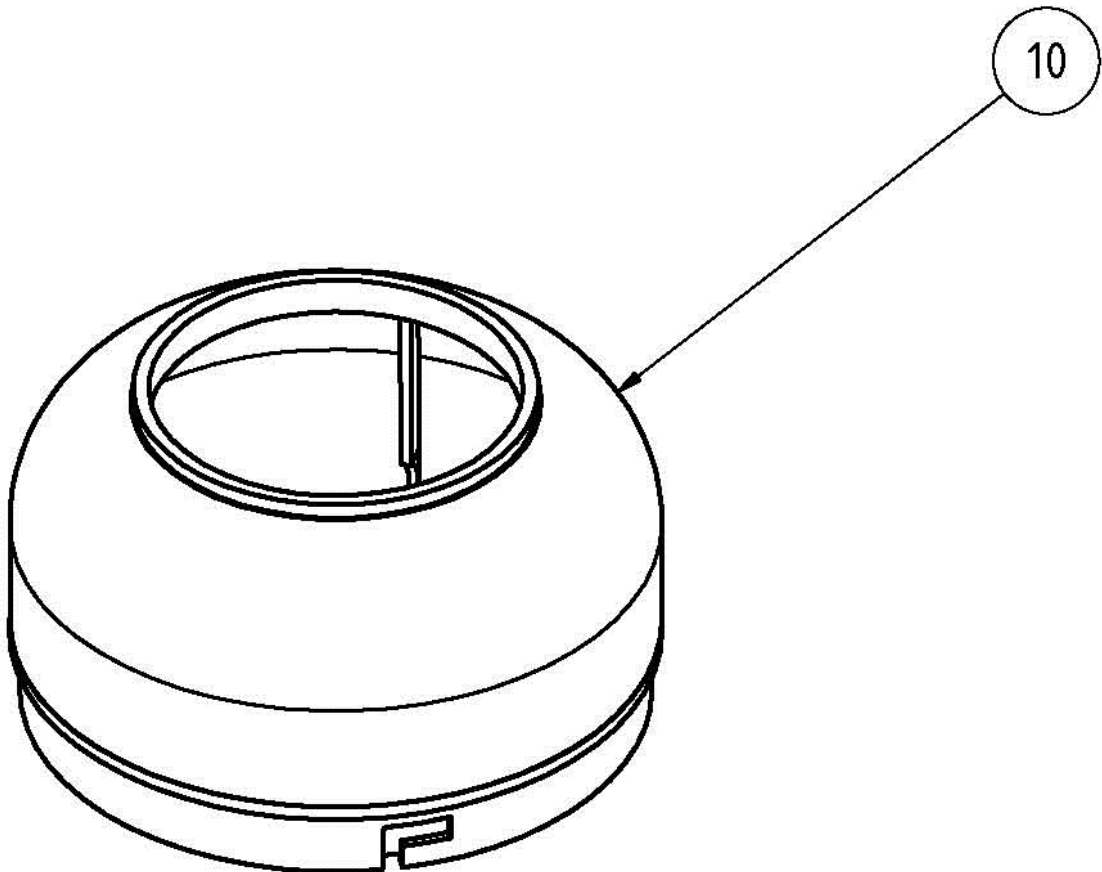
FIG. ITEM	PART NUMBER	AIRLINE STOCK NUMBER	INDENT	NOMENCLATURE	EFF CODE	UNIT PER ASSY
01A						
001A	SD300BU-88		1	SOAP DISPENSER COUNTER TOP BASE UNIT SEE FIG. 01A FOR DETAILS		1
010	SD300SP-10		2	COVER SEE FIG. 02A FOR DETAILS		1
020	SD300SP-20		2	HOLDER SEE FIG. 03A FOR DETAILS		1
030	SD300SP-30		2	SCREW ASSY SEE FIG. 04A FOR DET BKDN		1

- ITEM NOT ILLUSTRATED

PAGE
10001A-1

25-40-03

Oct 01/2010



COVER – P/N SD300SP-10
FIGURE 2A



COMPONENT MAINTENANCE MANUAL
SOAP DISPENSERS
SEIFENSPENDER
SD300BU-88

No.: 25-40-03

Issue: A

Date: Oct 01/2010

FIG. ITEM	PART NUMBER	AIRLINE STOCK NUMBER	I N D	NOMENCLATURE	EFF CODE	UNIT PER ASSY
-----------	-------------	----------------------	-------	--------------	----------	---------------

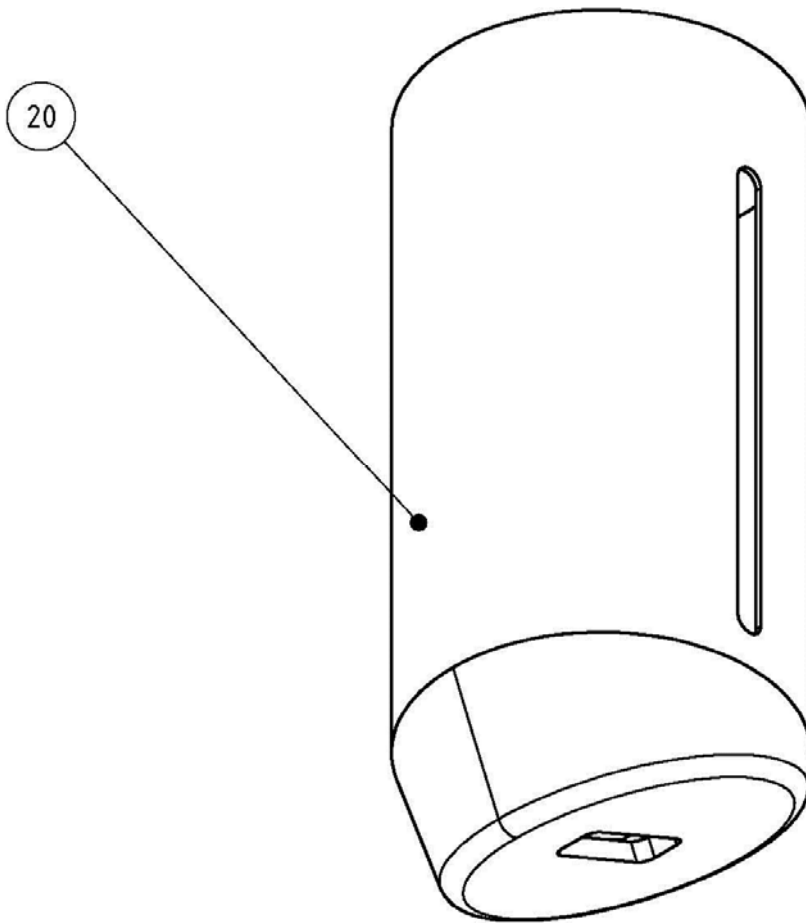
02A	010 SD300SP-10		1	COVER		1
-----	----------------	--	---	-------	--	---

- ITEM NOT ILLUSTRATED

PAGE
10002A-1

25-40-03

Oct 01/2010



HOLDER – P/N SD300SP-20
FIGURE 3A



COMPONENT MAINTENANCE MANUAL
SOAP DISPENSERS
SEIFENSPENDER
SD300BU-88

No.: 25-40-03

Issue: A

Date: Oct 01/2010

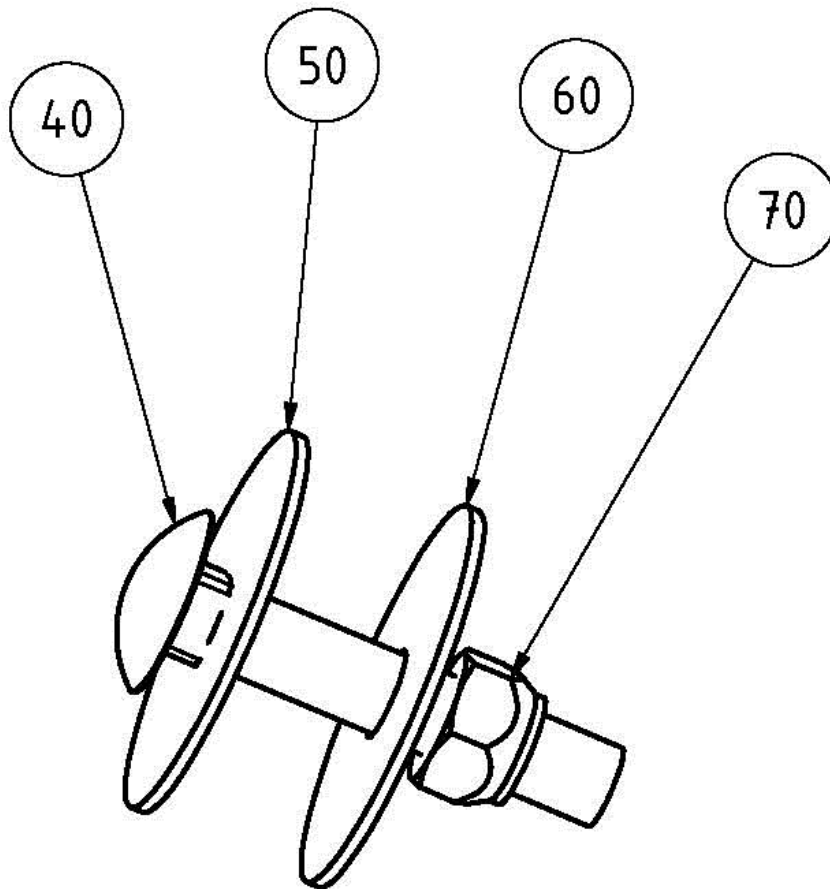
FIG. PART NUMBER	AIRLINE	I	NOMENCLATURE	EFF	UNIT
ITEM	STOCK	N		CODE	PER
	NUMBER	D			ASSY
03A					
020 SD300SP-20		1	HOLDER		1

- ITEM NOT ILLUSTRATED

PAGE
10003A-1

25-40-03

Oct 01/2010



SREW ASSY - P/N SD300SP-30
FIGURE 4A

FIG. PART NUMBER	AIRLINE	I	NOMENCLATURE	EFF	UNIT
ITEM	STOCK	N		CODE	PER
	NUMBER	D			ASSY
04A					
004A	SD300SP-30		1	SCREW ASSY	RF
040	SD300SP-40		2	SCREW	1
050	SD300SP-50		2	WASHER, RUBBER	1
060	SD300SP-60		2	WASHER, METAL	1
070	SD300SP-70		2	NUT, SELF-SECURING	1

- ITEM NOT ILLUSTRATED



COMPONENT MAINTENANCE MANUAL
SOAP DISPENSERS
SEIFENSPENDER
SD300BU-88

No. : 25-40-03

Issue: A

Date: Oct 01/2010

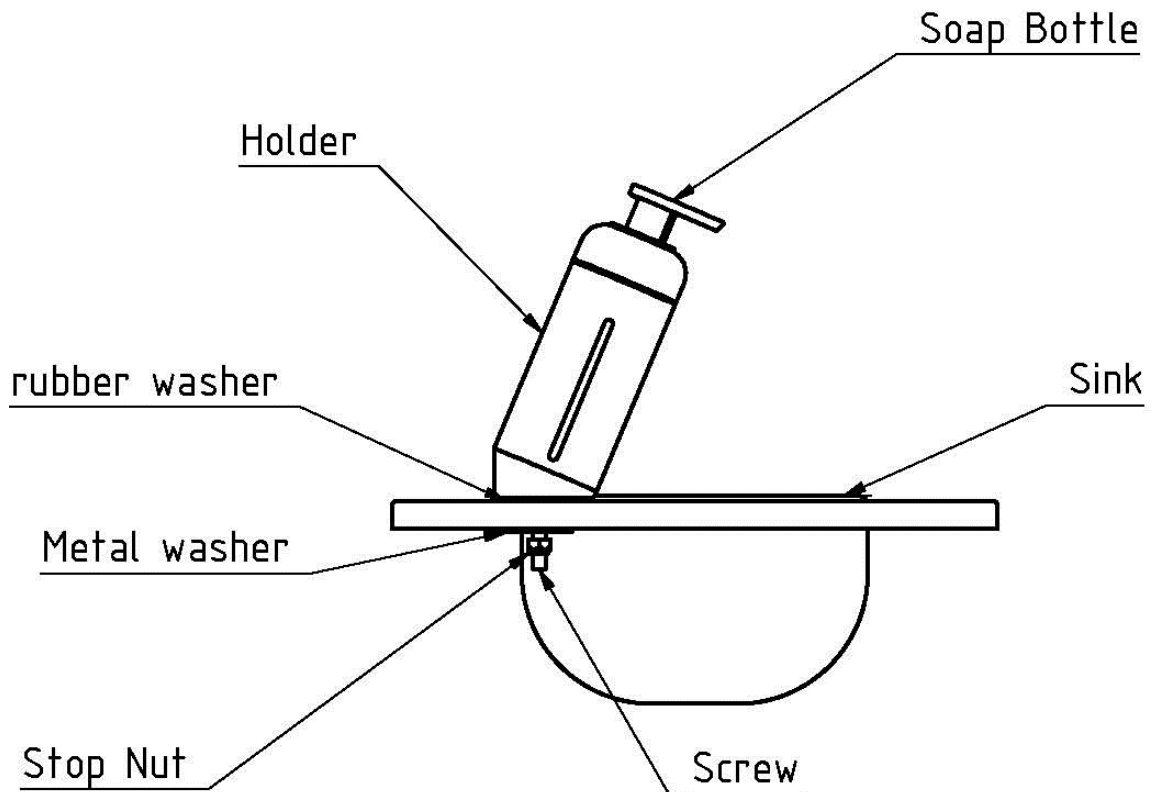
SPECIAL PROCEDURES

1. NOT APPLICABLE

REMOVAL

A. Procedure

- (1) Removal of Base Unit SD300BU-88 (Ref. Fig. 12001)
 - (a) Unscrew nut (70) from screw (40).
 - (b) Remove metal washer (60) from screw (40).
 - (c) Remove holder unit (20) from cabinet.



REMOVAL OF SD300BU-88
FIGURE 12001

INSTALLATION

A. List of Materials

NOTE: Equivalent substitutes can be used for listed items.

MATERIAL	SPECIFICATION	SOURCE
METAL WASHER	SD300SP-60	LOCAL PURCHASE OR CBS
SELF-SECURING NUT	SD300SP-70	LOCAL PURCHASE OR CBS

INSTALLATION MATERIALS
 TABLE 13001

B. General

NOTE: Before first installation, the location has to be chosen taking into consideration the available space needed to install all parts into the cabinet surface. The diameter of the mounting hole must be 9 mm (0.36 in.)

C. Procedure

(1) Installation of Unit PN SD300BU-88 (Ref. Fig. 13001)

- (a) Place screw (40) through the mounting slot in the bottom of the holder (20).
- (b) Install rubber washer (50) onto screw (40).
- (c) Insert screw (40) into the mounting hole of the cabinet.

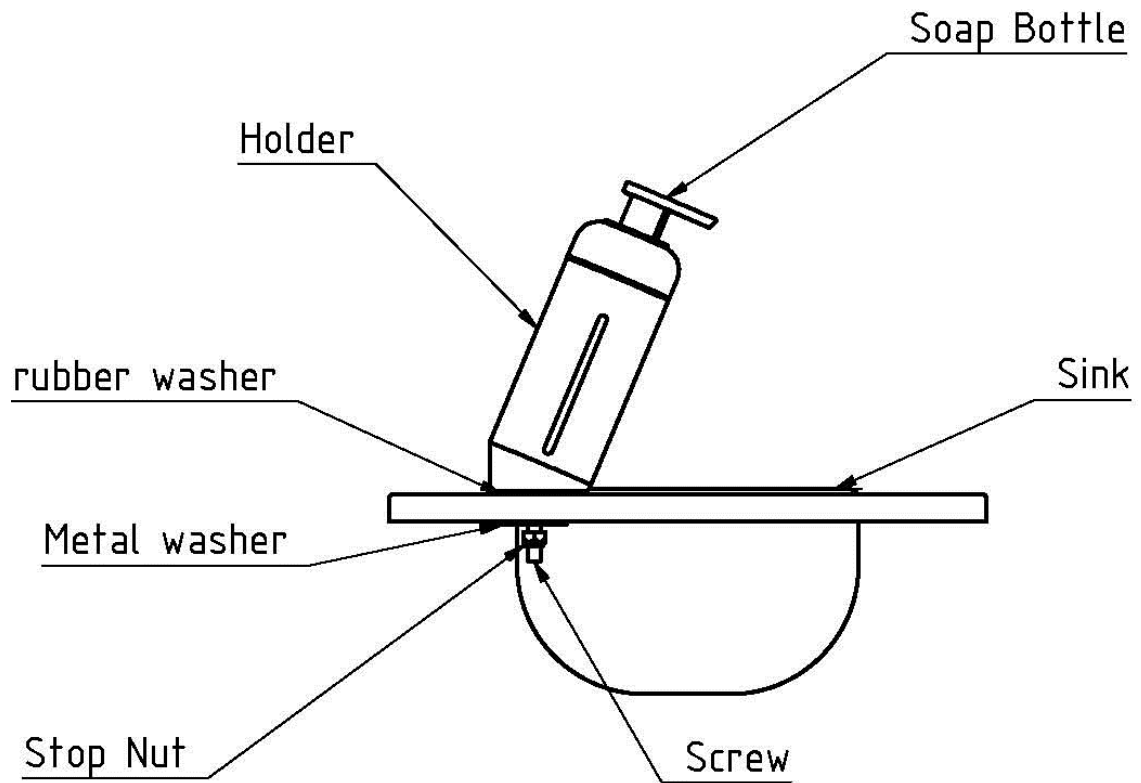
NOTE: Ensure that the tendency of the holder extends over the sink and that it remains in position during further installation.

- (d) Install metal washer (60) and self-securing nut (70) onto screw (40).

CAUTION: TO PREVENT DAMAGE TO THE HOLDER, DURING FASTENING SELF SECURING NUT, USE NOT TOO MUCH POWER. TORQUE VALUE IS 15,00 NM (11.06 lb. ft.).

- (e) Tighten up self-securing nut (70).

NOTE: For filling the unit refer to chapter SERVICING.



INSTALLATION OF SD300BU-88
FIGURE 13001

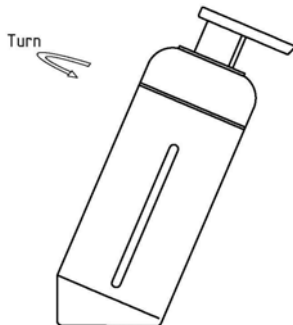
SERVICING

1. REFILLING

The unit shall be refilled without removal of the soap dispenser base unit.

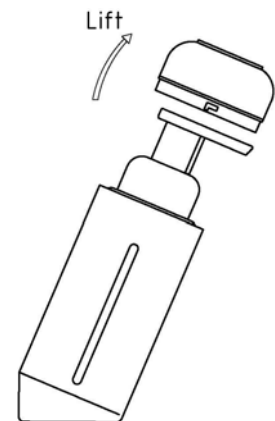
A. Procedure

- (1) Turn cover counter clockwise approx. 5 mm turn until cover has been released from holder.
- (2) Lift cover from the holder by moving it over the dosing pump.
- (3) Replace complete empty disposable soap bottle with new full disposable soap bottle.
- (4) Attach cover to the holder. Make sure the 3 pins of the holder fit into the slots of the cover.
- (5) Secure cover by turning clockwise until it stops (approx. after 5 mm turn).

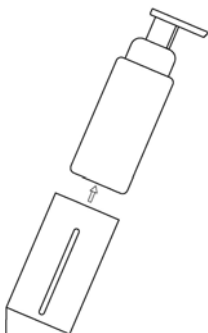


- (1) Turn cover counter clockwise approx. 5 mm turn until cover has been released from holder.

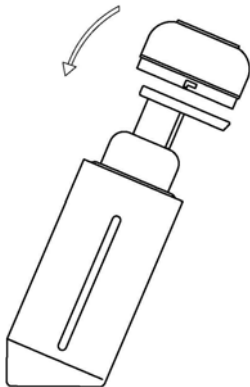
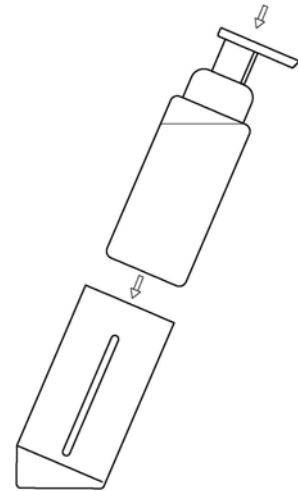
- (2) Lift cover from the holder by moving it over the dosing pump.



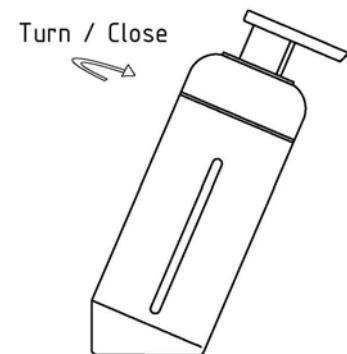
- (3a) Remove the empty disposable soap bottle.



(3b) Insert a new full disposable soap bottle.



(4) Attach cover to the holder. Make sure the 3 pins of the holder fit into the 3 slots of the cover.



(5) Secure cover by turning clockwise until it stops (approx. after 5 mm turn).

REFILLING OF SOAP DISPENSER SD300BU-88
FIGURE 14001

PAGE 14002

25-40-03

Oct 01/2010

STORAGE

1. GENERAL

A. Storage Instructions

- (1) Place unit in a suitable cardboard box and identify on the outer surface.
- (2) Store in a dry room.